



Our Purpose: To Establish federal designation of the Pike National Historic Trail
 We are a Charitable nonprofit organization
www.zebulonpike.org

Pike National Historic Trail Association

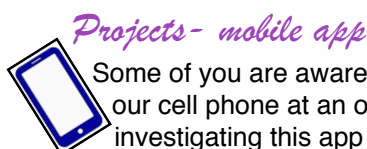
Newsletter

Sep-Nov 2014 Vol. 8 No. 5



• Add another candle - Our Sixth Birthday

Our Association celebrated it's sixth birthday last October.



Projects - mobile app

Some of you are aware of a mobile app(lication) on our smart cell phones which can be used by pointing our cell phone at an object and getting information about the site. We are in the preliminary stages of investigating this app for the users of our Pike Trail.

Right now this project would involve identifying sites, gathering information about that site, and setting up the app. It also involves investigating the cost of using and setting up the app., maintaining it, and finding a location for our funding of this project.

It has the potential of being a real plus for the Pike National Historic Trail Association.

Opportunity to help- Let us know using the contact information at the end of this Newsletter if you would like to help short-term or long-term on this potential project.

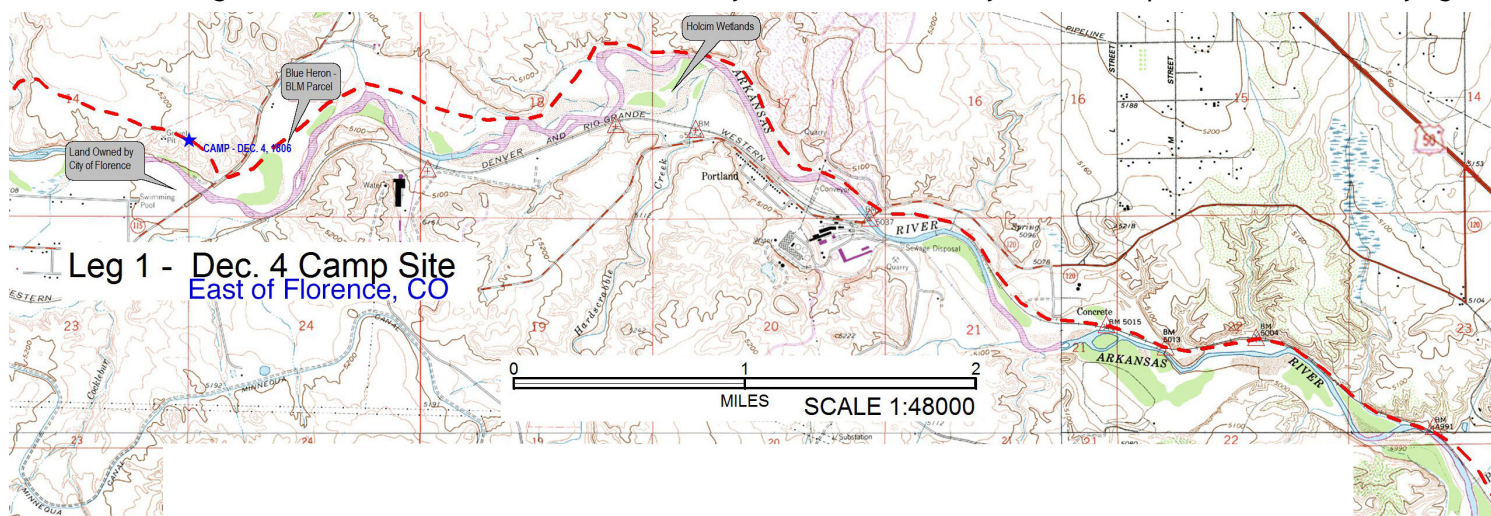
Following Pike's Footsteps approaching Cañon City- D. Nelson Walker Part 4

'Dec. 4' - East of Florence

Leg #1

Campsite designated Dec. 4, 1806; located approximately 2.5 miles east of Florence on the north side of the river about ¼ mile north of where State Hwy 115 crosses the Arkansas River. The coordinates are N 38 degrees, 23 minutes, 35.62 seconds; W 105 degrees, 4 minutes, 12.54 seconds. The legal description is NW ¼ SW ¼ of Sec. 13, T19S, R69W, 6th PM, Fremont County.

This leg of Pike's route crosses from Pueblo County into Fremont County. Scott's map shows the route staying on



the north side of the river to the campsite. No one can really trace Pike's exact footsteps along the Arkansas River today. There are literally scores of gulches and tributaries between Pueblo and Canon City, with deep ravines and cliffs that would have forced his men and horses to take many circuitous detours. Therefore, the paths I've shown on the map are not intended to represent a precise depiction of his route. Never the less, at some point his path intersects State Highway 120 about 5 miles west of the Dec. 2-3 campsite. Thus, Highway 120 is a good candidate for inclusion as a car and bike route between US 50 and State Highway 115. Highway 120 goes by the Holcim Cement Plant, where most of the land in this area is owned by the Holcim Cement Company and not accessible to the general public. However, there is a parcel of land owned by Holcim that is open to the public, known as the Holcim Wetlands, and which is located (continued on page 2)

D. Nelson Walker Part 4 continues- where Hardscrabble Creek joins the Arkansas River. The coordinates for the wetlands are N 38-23-46.59; W 105-1-56.35. It includes a parking lot and a hiking trail for viewing wildlife. Although the parcel is located on the south side of the river, it is very close to the path that Pike would have taken and offers a good opportunity for interpretive signage and inclusion as part of the car, bike, and hike route. The Holcim Company is very open to cooperating with the community and would probably be agreeable to providing interpretive signing at this site.

This campsite itself is located on private land with no legal public access; however, it is located very close (less than ¼ mile) to a parcel of BLM Public Lands immediately south and east of the campsite. Most of the BLM parcel is located on the east side of Highway 115, but a small piece extends across to the west side near the Highway bridge. It is known locally as the Blue Heron Wetlands, which includes a parking lot for foot and bike trails, as well as public access to the Arkansas River for fishing and hunting. The coordinates for Blue Heron are N 38-23-32.93; W 105-3-46.62. Pike and his men would have had to cross this parcel to reach the campsite. Consequently, the BLM parcel offers an excellent opportunity for interpretive signage and designation along the car, bike, and hike route. I also know that the Colorado State Parks Department has future plans for incorporating the Blue Heron parcel as part of the Arkansas Headwaters State Park. There is also a nearby parcel of land located on the south side of the Arkansas that is owned by the City of Florence. This parcel adjoins the Fremont Sanitation Plant on the south and Highway 115 on the east. The city property is undeveloped but is used heavily by locals to access the river for fishing. Consequently, the City of Florence might be interested in providing some kind of signage here. (*D. Nelson Walker Part 5 - next issue*) © 2014- N.D. Walker- Pike NHTA

Pike crossing the Rio Grande River in Colorado - Part 1

another investigationPikeNHTA Board Priority- Pike in Colorado

In addition to using a magnifying glass on the Salida area, we are beginning to look in the Alamosa area in particular at their crossing of the Rio Grande.

We have some preliminary clues about the crossing of the Rio Grande River on January 31, 1807 including a member trek to one potential site.

Pike's Journal indicates that the SW party passed the Great Sand Dunes, CO (now Mosca, CO) on it's eastern side (probably from passing over Medano Pass). They stayed in the Zapata Falls area before dropping down in elevation into the San Luis Valley towards the Rio Grande and Conejos River, siting steam from a (then) hot springs.

General and specific- We have been looking at probable sites for the crossing the Rio Grande and find three (or more) possibilities:

1. Alamosa National Wildlife Refuge, 9383 El Rancho Lane, Alamosa, CO 81101 (37.438007, -105.802298) visited (associated with today's Chicago Ditch),
2. Pike's likely location on 30Jan 1807 (37.415020, -105.780894) still in the Alamosa National Wildlife Refuge west of Chicago Ditch, (9383 El Rancho Lane, Alamosa, CO 81101),
3. Pike possible location on 31Jan, 1807, in Costilla County, CO (about 37.315040, -105.740500) 27485-27999 CR Z, Sanford, CO 81151 (CR Z east of CR 24, east of Stewart Ditch)

The confluence of the Conejos River and Rio Grande is at 37.303656, -105.735951.

The Pike Stockade is near CR 24 and CR Y, Sanford, CO (37.293631, -105.809944) west of the confluence.

All sites are SE of Alamosa, CO.

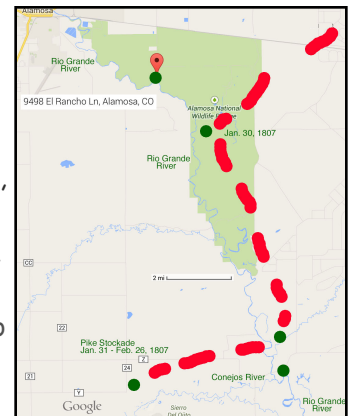
Site #1 is at 37.438007, -105.802298 is immediately on the east side of the Rio, a 16 minutes drive or 6.2 miles SE of Alamosa, CO using US 160 and El Rancho Lane. Walk over the Chicago Ditch bridge to the Rio. It has been preliminarily inspected and is on public land.

Site # 2 is approximately at 37.415020, -105.780894 is immediately on the east of the Rio, a 24 minute drive or 7.9 miles SE of Alamosa, CO to it's west side Use S. River Rd. which becomes Rd. S112. After 1 mile turn left onto an Unknown road (possibly Rd. 11S) to the road end and walk in.

It has been NOT been preliminarily inspected and is on public land. We believe it can also be walked to from Site #1.

Site # 3 is approximately at 37.315040, -105.740500 is immediately on the east side of the Rio, a 16 minutes drive or 6.2 miles SE of Alamosa, CO from the west side.

It has NOT been preliminarily inspected and is possibly on private land. It is 14.1 mi / 40 min from Site #2 using 112/CR24 and turning left (East) on Z to the Rio and walking in along the Rio. It appears from the satellite that either side is walkable but a property owner's permission should be sought. (continues on p. 3)



Rio grande crossing- continues

Opportunity to help- Let us know using the contact information at the end of this Newsletter if you would like to help. If you're visiting the San Luis Valley, you may wish to peruse these sites.

Here are some **Travel Directions from Great Sand Dunes NP Mosca, CO to Site #1 to Pike Stockade**

Great Sand Dunes National Park and Preserve Colorado

- | | | | |
|--|---------|-----------------------------|---------|
| 1. Head southwest on CO-150 S toward Pinon Cir | 19.4 mi | 2. Turn right onto US-160 W | 11.0 mi |
| 3. Turn left onto El Rancho Ln | 2.4 mi | 4. Turn left | 266 ft |

Potential Crossing Site #1- 9498 El Rancho Ln., Alamosa, CO 81101 32.8 mi / 41 min

- | | | | |
|--|------------------|---|----------------|
| 5. Follow El Rancho Ln to US-160 W | 2.4 mi / 9 min | 6. Head north toward El Rancho Ln | 266 ft |
| 7. Turn right onto El Rancho Ln | 2.4 mi | 8. Turn left onto US-160 W | 3.4 mi / 6 min |
| 9. Follow S River Rd and Rd S 112 to County Road 24 in Conejos Co. | 14.2 mi / 36 min | | |
| 10. Turn left onto Main St. | 0.1 mi | 11. Main St turns slightly right and becomes La Due Ave | 0.3 mi |
| 12. Turn left onto 9th St | | 13. Continue onto Co Rd 110 S/Old Airport Rd | 0.2 mi |
| 14. Turn left onto S River Rd | 3.5 mi | 15. Continue onto Rd S 112 | 5.6 mi |
| 16. Continue onto Co Rd 24 | 4.3 mi | | |

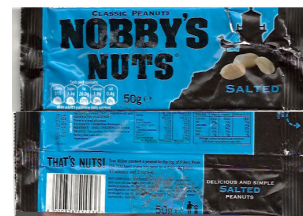
Pike STOCKADE site- walk in 24 Rd Sanford, CO 81151 20.0 mi / 52 min

Peanuts in the Cotswolds, England Pike country Alan Vainley

My wife and I were sitting last month in the Eight Bells Inn in Chipping Campden, Cotswold District, UK just north of the Zebulon Pike homeland. Our plans were to enjoy some fine English ale and cider while waiting for some fine fish and chips when the kitchen opened. We then were attending a concert by the The Dante Quartet (from Cambridge) at St James Church.

While waiting for the barrel to be changed, we bought two packages of peanuts. I have a propensity to read labels and read my peanut package. **While sitting in Pike country** to my surprise I read: **"Tom Miller pushed a peanut to the top of Pike's Peak (14,100 feet) using his nose in 4 days, 22 hours, 47 minutes, and 3 seconds."**

What a coincidence!



Tom Miller pushed a peanut to the top of Pike's Peak (14,100 feet) using his nose in 4 days, 22 hours, 47 minutes and 3 seconds.

Here are some US areas named for Zebulon Montgomery Pike

- | | | | |
|---|---|--|-----------------------|
| Pikesville, Maryland | Pike County, Alabama | Pike County, Arkansas | Pike County, Illinois |
| Pike County, Kentucky | Pike County, Mississippi | Pike County, Missouri | Pike County, Indiana |
| Pike County, Ohio | Pike County, Pennsylvania | Pike County, Georgia & its county seat Zebulon | |
| USS General Pike | Fort Pike (SE and near New Orleans, LA- 30°9'58"N 89°44'13"W) | | |
| Pikes Peak (CO) | Pike National Forest (CO) | Pikes Peak (Iowa) | |
| Piketon, Ohio | Pikeville, Kentucky | Pike Island in Fort Snelling State Park, Minnesota | |
| Pike Creek Township in Morrison County, Minnesota | Pike Township, Marion County, Indiana | | |
| Pike Trail League, Kansas high school activities league | | | |

Pike Genealogy

There are those among our readers who have an interest in finding our roots or genealogy. The Pike Family Association has large files of genealogical information regarding Zebulon Montgomery Pike's family. This is only what can be found in the internet to start a discussion on this topic.

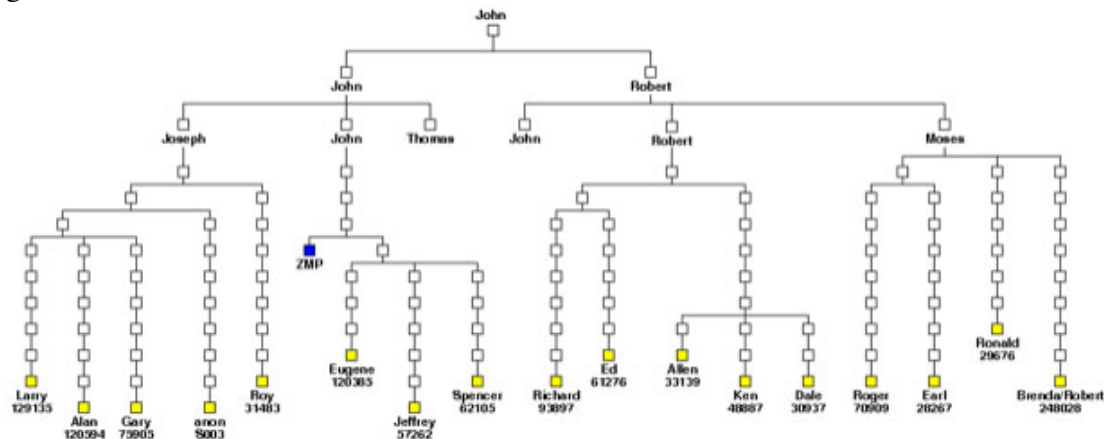
The current and a past president of the Pike Family Association have agreed to work on a study to correct what we find on the internet. We will print what we found.

There will be more comments on both Articles in later additions of our Newsletter about the study as we get comments from our readers.

Article 1- Pike DNA Project There is an interesting genealogical study called the Pike DNA Project by volunteer coordinators David Pike (Mem. Univ. of Newfoundland) and Stuart Pike (Alamo, CA). We present this for your information and for your interest in Pike. Zebulon Montgomery.

Pike's family are originally from Hampshire and Wiltshire, England. John Pike who arrived in Massachusetts on 03 June 1635. (continues on p. 4)

Pike Genealogy Article 1 continues There will be more comments in later additions of our Newsletter about the study as we get comments from our readers.



Article 2- Pike Genealogy on the internet

Name	aka	Birthdate	Location	Death date	Location
Hugh Pyke (Pike) (Pyke)		1400	England	1450	England
Thomas Pyke (Pike)		1435	England	1480	England
Robert John Pyke (Pike)		1474	Somersetshire, England	Sep 24, 1557	Marton, Great Bedwin, Wiltshire, England
William Pike		1500	Somerset, England	1550	White, Wiltshire, England
Stephen Pyke (PIKE)		1532	England	1600	Whiteparish, Wiltshire, England
John Pike		1564	Whiteparish, Wiltshire, UK	1587	White Parish, Wiltshire, England
John Pyke, Sr.	"John /Pike/"	Oct 1572	White Parish, Wiltshire, UK	May 26, 1654	Salisbury, Essex, MA
John Pyke, Jr. Captain		1613	White Parrish, Wiltshire, UK	1659	
John Pyke (Pike)- Judge		Mar 30, 1650	Newbury, Essex County, Massachusetts Bay Colony	Aug 13, 1714	Woodbridge, Middlesex County, Province of NJ
Zebulon Pike	"Zabulun Pike"	Aug 17, 1693	Woodbridge, Middlesex, NJ	Febr 6, 1763	Woodbridge, Middlesex, NJ
James Pike	"James Pyke"	Mar 1721	Woodbridge, Middlesex , NJ	May 15, 1761	Woodbridge, Middlesex, NJ
Zebulon Pike, Sr.		Sep 16, 1751	Woodbridge, New Jersey	July 27, 1834	Lawrenceberg, Dearborn, IN
Zebulon Montgomery Pike, Brig. General	"Z.M. Pike"	Jan 5, 1779	Lamberton, NJ, US	Apr 27, 1813	Toronto, York, Ontario, Canada
Brother of ZM Pike					
James Brown Pike, Brother of ZM Pike	"Pyke"	May 1, 1784	New York, NY	Apr 8, 1855	Kirkville, IA, USA
Sons of JB Pike					
1 Montgomery Pike		1819			
2 George Washington Pike		1819			
3 John Brown Pike		Nov 22, 1827			
4 William Pike, Donner Party		1814	Dearborn Co., IN	~ Feb 1847	Donner Pass, CA

[geni.com file by Iona Merle Smith under the file name- Brig. General Zebulon Pike, Jr., USA](#)

© 2014, Pike National Historic Trail Association Contact: harv.pike@gmail.com Our Website: www.zebulonpike.org

Pike National Historic Trail Association 10060 Blue Sky Trail Conifer CO 80433 303/816-7424